

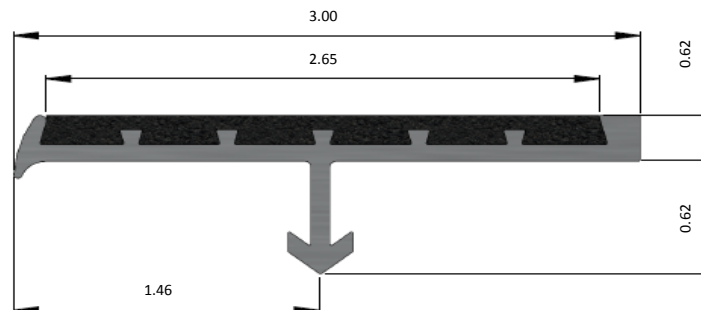
# BOLD STEP® Anchor Nosings & Treads

BOLD STEP® Anchor Systems can be used for poured & precast concrete, steel-pan cement filled stairs and terrazzo stairs.

BOLD STEP® is an aluminum extrusion inlayed with our proprietary mineral abrasive anti-slip epoxy-filler offered in a variety of colors and sizes. Either used in new construction or renovation projects, our nosings and treads deliver maximum safety and durability while providing a look to compliment today's building designs.

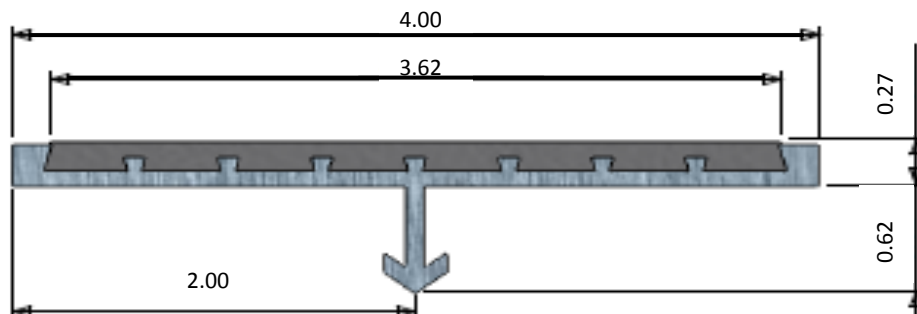
## 3" Bullnose

403AB1



## 4" Straight Edge

404AF1



Sure-Foot Item #	Description	
403AB1	3" Bullnose with Anchor	Specify Color & Length up to 120"
404AF1	4" Straight Edge with Anchor	Specify Color & Length up to 120"
GREY • RED • BROWN • YELLOW • GLOW • BLACK • BLUE • DARK GREEN		

**DS Parke Solutions**

**Toll 1-855-810-0944 • Ph/Fax 416-207-0944 • [www.dsparkesolutions.com](http://www.dsparkesolutions.com)**

# BOLD STEP®

## INSTALLATION

Avoid the use of very large aggregate in concrete mix. Avoid using concrete with very low slump.

BOLD STEP® Anchor treads must be in place before initial set of concrete occurs.

Schedule pours to ensure quick and smooth installation.

Puddle the concrete; tamp the nosing in to ensure the concrete forms properly around the anchor.

Close stairway for 24 hours after pour.

## MAINTENANCE

Epoxy surface can be swept to loosen and remove dirt. Treads can be cleaned using a general purpose industrial floor cleaner. For caked on dirt, use a stiff bristled brush with industrial cleaner. Treads can be pressure sprayed up to 1000 psi.

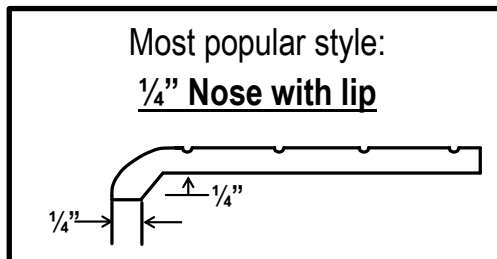
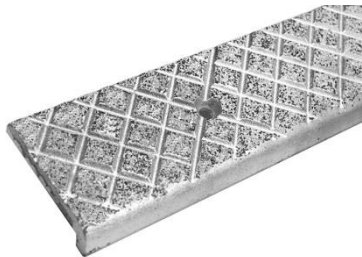
## ARCHITECTURAL SPECIFICATION

All aluminum treads shown in the finish schedule or listed in this specification shall be **BOLD STEP®** stair nosings as furnished by **Sure-Foot Industries Corp.** located in Cleveland, Ohio. Products shall be constructed of heat treated exterior grade 6063 T5 aluminum and filled with chemical resistant closed cell anti-slip epoxy coating combined with mineral abrasive grits which are uniform through-out providing anti-slip properties. Shall be constructed of first quality materials and will be smooth, free of imperfections which detract from its appearance and contain no asbestos fiber. BOLD STEP® stair treads shall be a minimum of 0.25" (6.35 mm) nominal thickness, \_\_\_\_\_" (\_\_\_\_mm) in nominal depth, \_\_\_\_\_" (\_\_\_\_mm) in nominal length, in either single color or color combinations stated and shall conform to industry standards.

## INQUIRE ABOUT BOLD STEP® CAST ABRASIVE NOSINGS FOR ARCHITECTURAL INSTALLATIONS

BOLD STEP® Cast Treads are non-corrosive, attractively designed and will virtually last the life of the building.

Available in cast aluminum and cast iron.



**DS Parke Solutions**

**Toll 1-855-810-0944 • Ph/Fax 416-207-0944 • [www.dsparkesolutions.com](http://www.dsparkesolutions.com)**