

BOLD STEP® Cast Abrasive Nosings

BOLD STEP® Cast Abrasive Nosings are non-corrosive, attractively designed and will virtually last the life of the building.

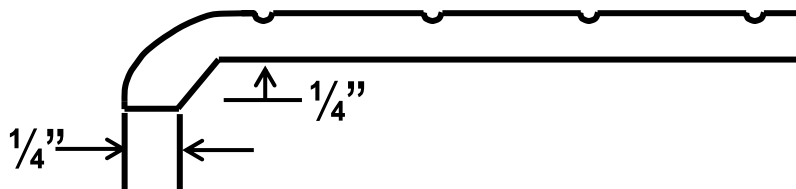
Standard Surface: Cross-hatched abrasive

Standard Anchor for Fresh Concrete: Wing anchor

Standard Anchor for Set Concrete: Expansion shield or ¼" Tapcon anchor

Standard Sizes: 3" and 4" depths; 36", 48" and 60" lengths

Most popular style: ¼" Nose with lip

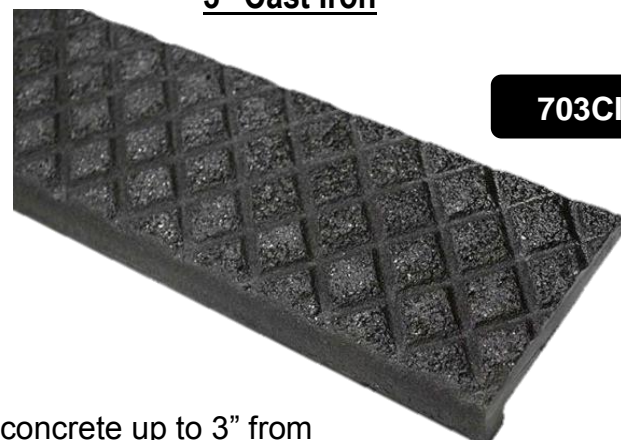
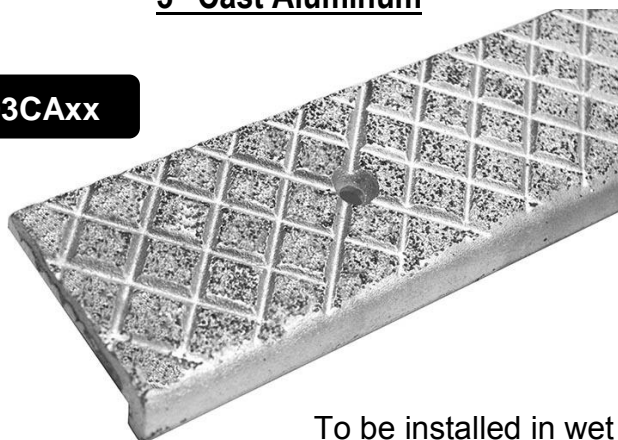


3" Cast Aluminum

3" Cast Iron

703CAxx

703CIxx



To be installed in wet concrete up to 3" from end of stairs and even with front of riser line.

DS Parke Solutions

Toll 1-855-810-0944 • Ph/Fax 416-207-0944 • www.dsparkesolutions.com

BOLD STEP®

MAINTENANCE

Surface can be swept to remove and loosen dirt. Cast nosings can be cleaned using a general purpose industrial floor cleaner. For encrusted dirt, use a stiff bristled brush with industrial cleaner. Cast Nosings can be pressure sprayed up to 1000 psi.

ARCHITECTURAL SPECIFICATION

All castings will be of uniform quality, free from holes, shrinkage defects, swells, cracks, or other defects. Treads will be true to pattern. Casting material will be of high quality iron or aluminum. Castings will be free of fins, burrs and slag. Cast iron will have one coat of black paint, aluminum will have a natural sand cast finish.

Surface will have silicon carbide abrasive, a minimum of 2.25 ounces per square foot to a minimum of 1/32 of an inch.

Fasteners

Curves

Miters

Shipping

Fresh Concrete: Wing anchor included

Set Concrete: Expansion shield or ¼" Tapcon anchor (specify)

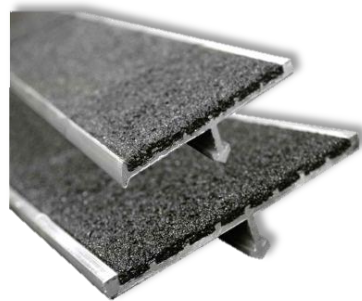
NOT available on cast nosings

Add \$10.00 for each miter cut

FOB Cleveland

INQUIRE ABOUT BOLD STEP® ANCHOR NOSINGS & TREADS FOR ARCHITECTURAL INSTALLATIONS

BOLD STEP® Anchor Systems can be used for poured and precast concrete, steel-pan cement filled stairs and terrazzo stairs.



DS Parke Solutions

Toll 1-855-810-0944 • Ph/Fax 416-207-0944 • www.dsparkesolutions.com